

## The right choice for a healthier you

Having a good health plan is important. So is getting quality care. With Kaiser Permanente, you get both.

- Choose your doctor, and change at any time.
- Email your doctor's office with nonurgent questions.
- Make routine appointments by phone, computer, or mobile device.
- Call trained nurses for advice 24/7.
- Get the convenience of having your doctor, the lab, and the pharmacy all under one roof (at many facilities).
- Fill most prescriptions in person, by phone, online, or with our app.

## Want to learn more?

Visit [kp.org/eutf](http://kp.org/eutf) or call our Member Services, Monday-Friday, 7 a.m.-7 p.m. and Saturday, 9 a.m.-1 p.m. (closed holidays).

- **808-432-5250** (Oahu)
- **1-844-276-6628** (toll free from the neighbor islands)
- 711 (TTY)



## A website just for you: [kp.org/eutf](http://kp.org/eutf)

At [kp.org/eutf](http://kp.org/eutf), you'll find your Kaiser Permanente 2018 enrollment materials. You can also connect to our facility and physician directories and learn more about our services.



This is an advertisement

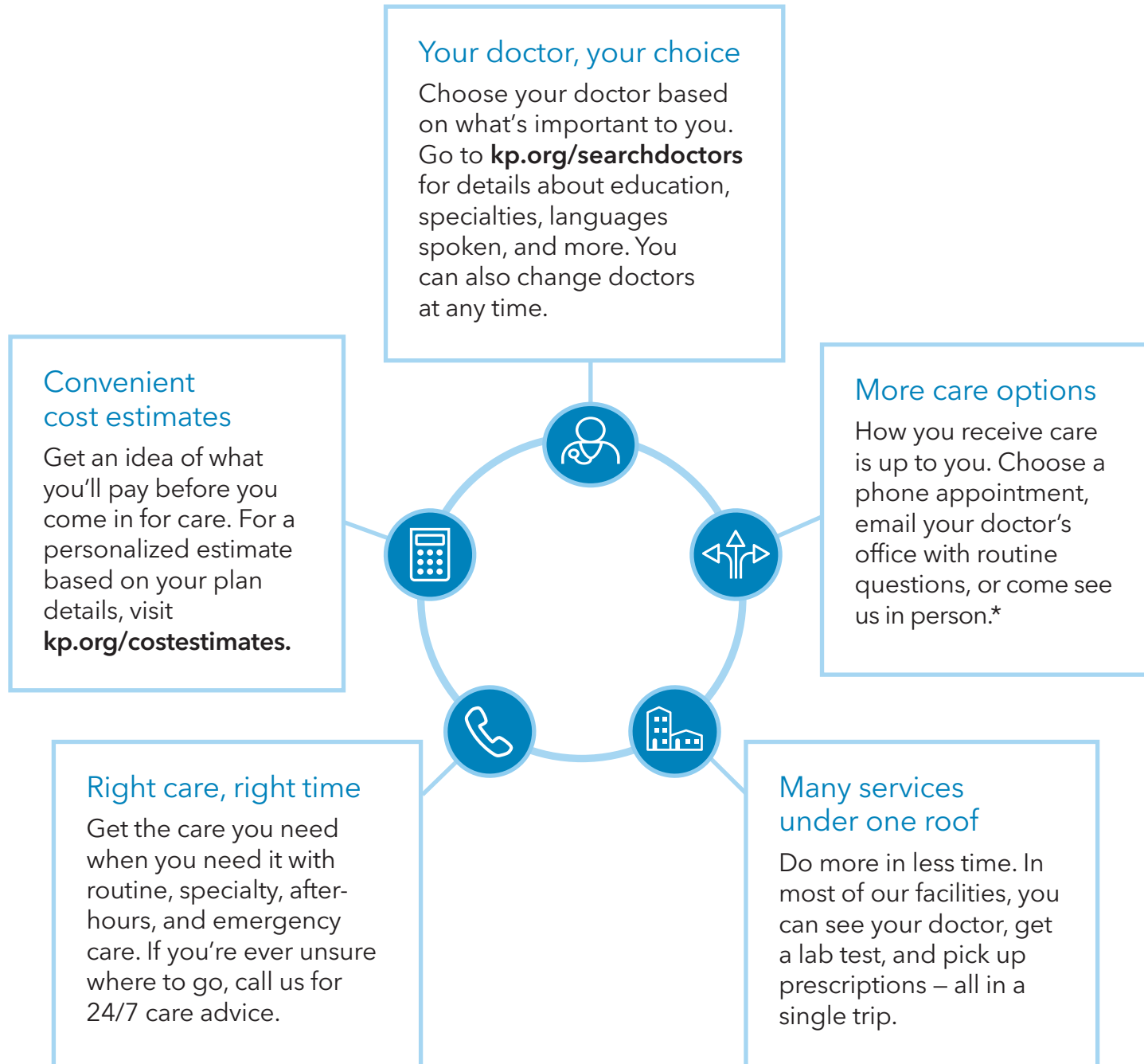
Hawaii Employer-Union Health  
Benefits Trust Fund  
2018 Benefits for EUTF Retirees

# Healthy together



For more information, call **808-432-5250** (Oahu) or **1-844-276-6628** (toll free from the neighbor islands).  
Monday through Friday, 7 a.m. to 7 p.m., except holidays  
Saturday, 9 a.m. to 1 p.m.  
Or visit [kp.org/eutf](http://kp.org/eutf)

# Welcome to care that fits your life



\*These features are available when you get care at Kaiser Permanente facilities.

2018 EUTF Benefits	EUTF Non-Medicare	EUTF Medicare Senior Advantage*
Annual deductible	None	None
Maximum out-of-pocket (Individual/Family)	\$2,000 / \$6,000	\$2,000 / \$6,000
<b>Hospital Inpatient</b>		
Services while hospitalized	No charge	No charge
<b>Outpatient</b>		
Primary & specialty care	\$15 per visit	\$15 per visit
Preventive care	No charge	No charge
Immunizations	No charge	No charge
Outpatient surgery	\$15 per visit	\$15 per visit
Lab, imaging, and testing	\$15 per visit	No charge
Ambulance services	20% of charges	20% of charges
Emergency room visits for initial treatment only (Waived if admitted)	\$50 per visit at a facility within the Hawaii service area; 20% of charges at a facility outside the Hawaii service area	\$50 per visit worldwide
<b>Mental Health and Chemical Dependency Services</b>		
Outpatient visits	\$15 per visit	\$15 per visit
Inpatient care	No charge	No charge
<b>Outpatient Prescription Drugs</b>		
Pharmacy (30-day supply)	\$15 per prescription	\$15 per prescription
Mail order (90-day supply)	\$30 per prescription	\$30 per prescription
<b>Additional Benefits</b>		
Home health care	No charge	No charge
Hospice care	No charge for home and residential hospice	No charge for home and residential hospice
Durable medical equipment	20% of charges	20% of charges
Skilled nursing care	No charge, up to 100 days per benefit period	No charge, up to 100 days per benefit period

\*Retirees 65 and older are required to enroll in EUTF's Kaiser Permanente Senior Advantage plan.

This is a summary of some benefits and their copayments and coinsurance.

This chart does not describe benefits in detail. Please see your detailed benefit summary on [kp.org/eutf](http://kp.org/eutf) for information about coverage, limitations, and exclusions for all benefits, including those not listed in this summary.