

Hawaii Employer-Union Health
Benefits Trust Fund
2019 Benefits for EUTF Retirees

Healthy together



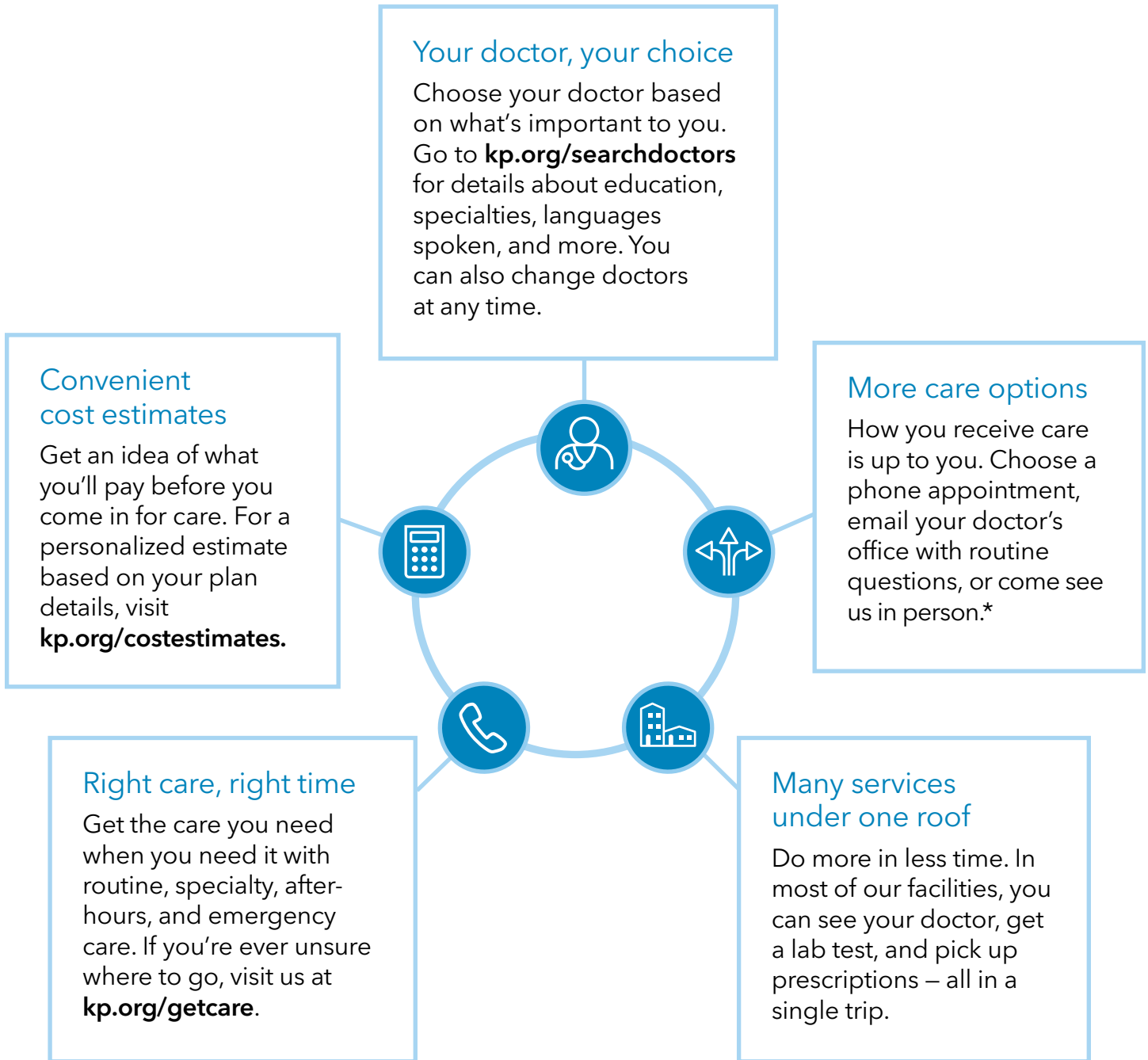
For more information, call **808-432-5250** (Oahu) or **1-844-276-6628** (toll free from the neighbor islands).
Monday to Friday, 7 a.m. to 7 p.m., except holidays,
Saturday, 9 a.m. to 1 p.m.

Or visit kp.org/eutf



KAISER PERMANENTE® **thrive**

Welcome to care that fits your life



*These features are available when you get care at Kaiser Permanente facilities.

2019 EUTF Benefits	EUTF Non-Medicare	EUTF Medicare Senior Advantage*
Annual deductible	None	None
Maximum out-of-pocket (Individual/Family)	\$2,000 / \$6,000	\$2,000 / \$6,000
Hospital Inpatient		
Services while hospitalized	No charge	No charge
Outpatient		
Primary & specialty care	\$15 per visit	\$15 per visit
Preventive care	No charge	No charge
Immunizations	No charge	No charge
Outpatient surgery	\$15 per visit	\$15 per visit
Lab, imaging, and testing	\$15 per visit	No charge
Ambulance services	20% of charges	20% of charges
Emergency room visits for initial treatment only (Waived if admitted)	\$50 per visit at a facility within the Hawaii service area; 20% of charges at a facility outside the Hawaii service area	\$50 per visit worldwide
Mental Health and Chemical Dependency Services		
Inpatient care	No charge	No charge
Outpatient visits	\$15 per visit	\$15 per visit
Outpatient Prescription Drugs		
Pharmacy (30-day supply)	\$15 per prescription	\$15 per prescription
Mail order (90-day supply)	\$30 per prescription	\$30 per prescription
Additional Benefits		
Home health care	No charge	No charge
Hospice care	No charge for home and residential hospice	No charge for home and residential hospice
Durable medical equipment	20% of charges	20% of charges
Skilled nursing care	No charge, up to 100 days per benefit period	No charge, up to 100 days per benefit period

*Retirees 65 and older residing in the Kaiser Permanente Senior Advantage plan service area are required to enroll in EUTF's Kaiser Permanente Senior Advantage plan. Please refer to the non-Medicare benefits for Medicare members who reside outside the Kaiser Permanente Senior Advantage plan service area.

This is a summary of some benefits and their copayments and coinsurance.

This chart does not describe benefits in detail. Please see your detailed benefit summary on kp.org/eutf for information about coverage, limitations, and exclusions for all benefits, including those not listed in this summary.

The right choice for a healthier you

Having a good health plan is important. So is getting quality care. With Kaiser Permanente, you get both.

- Choose your doctor, and change at any time.
- Email your doctor's office with nonurgent questions.
- Make routine appointments by phone, computer, or mobile device.
- Call trained nurses for advice 24/7.
- Get the convenience of having your doctor, the lab, and the pharmacy all under one roof (at many facilities).
- Fill most prescriptions in person, by phone, online, or with our app.

Want to learn more?

Visit kp.org/eutf or call our Member Services, Monday to Friday, 7 a.m. to 7 p.m. and Saturday, 9 a.m. to 1 p.m. (closed holidays)

- **808-432-5250** (Oahu)
- **1-844-276-6628** (toll free from the neighbor islands)
- 711 (TTY)

A website just for you: kp.org/eutf

At kp.org/eutf, you'll find your Kaiser Permanente 2019 enrollment materials. You can also connect to our facility and physician directories and learn more about our services.